

Heavy equipment moves in

by



A substantial amount of earthworks were completed prior to our working bee tomorrow Sunday 14th.

 Tweet

0  
 Like



The new mains water pipe has been laid from the meter through the boat shed and on the the clubhouse. This has greater capacity than the one being replaced and should provide cleaner and higher preasure water to the club house, along with new power feed to the boat shed.

A new storm water drain laid to allow extra parking right down the eastern side of the road opposite the club house to the boat shed.

The parking area has been stripped and fresh blue metal laid (still requires leveling tomorrow).



The old showers in the mens has been demolished ready for the intalation of the new showers in both the mens and ladies being four showers in each.

New toilets will also be installed in both the mens and ladies change rooms two in each.

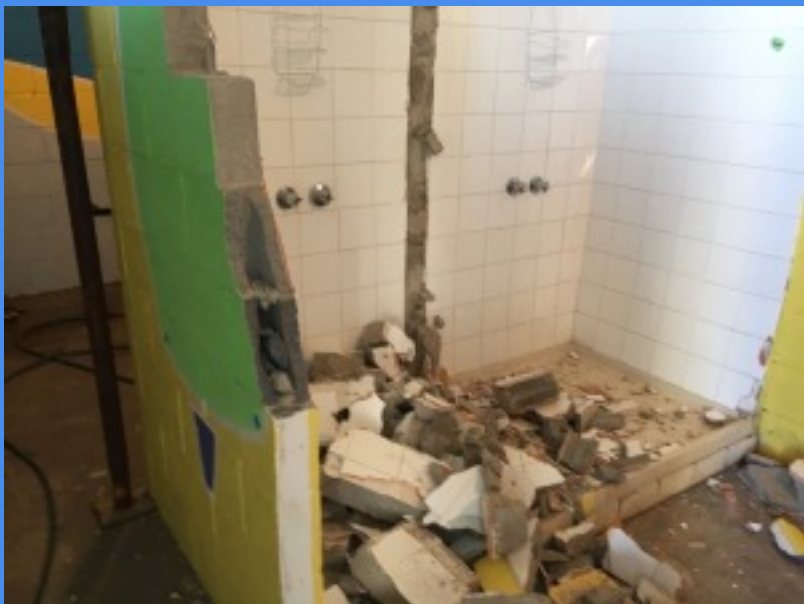
Trees have been trimed and the entrance gate area cleaned up.

See photos of work completed so far, which took the entire day until it was too dark to continue.























# Comments

**Comment Guidelines:** The SportsTG Network is made up of players, families and passionate sports followers like you who have a strong opinion about sport. That's great - we want you to have your say and share your thoughts with the world. However, we have a few rules that you must follow to keep it fun for all. Please don't be rude, abusive, swear or vilify others. Apart from some pretty serious sport sanctions, we also can ban you and report you if things get out of hand. So play fair and have fun, and thanks for your contribution.

0 Comments

Sort by Oldest ▾



Add a comment...



 Facebook Comments Plugin